



Description: Direct emission linear suspension luminaire composed of two parallel extruded aluminum profiles. Installation accessories to be ordered separately.

Body: profile in aluminum alloy 6060 T5, painted in “dry” white color with thermosetting epoxy powders at 180 ° C, after degreasing, phosphating and washing treatment. Other colors according to the RAL range are available on request. Supplied without heads and installation accessories (to be ordered separately).

Optical group: PMO optic in microprismatic polycarbonate, UV protected. Optic with controlled light emission UGR <19 and therefore compliant to be installed in environments with use of VDTs. Glow-wire test 850 ° C. Protection degree IP40.

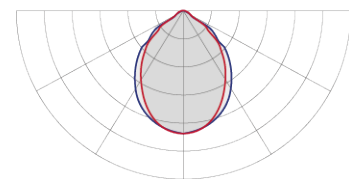
Wiring: power supply 220-240V 50 / 60Hz with rigid cable, sect. 0.50 mm² e PVC-HT sheath resistant to 90 ° C according to CEI 20-20 standards. Terminal block with maximum allowed cable cross section of 2.5 mm². Insulation class I. Suitable for installation on normally flammable surfaces.

- LED version with electronic driver with fixed output (ON / OFF), included.
 - LED DALI version with DALI standard digital dimmable electronic driver, included.
- Versions with emergency kit (1/3 hours of autonomy) are available on request.

Luminous source: High efficiency LEDs arranged on rigid modules, color rendering CRI> 80 (CRI> 90 available on request), color temperature 3000K or 4000K (LED diode selected 3 MacAdam ellipses in order to guarantee uniform chromaticity), duration> 50000 hours L80 / F10 at Ta = 25 ° C.



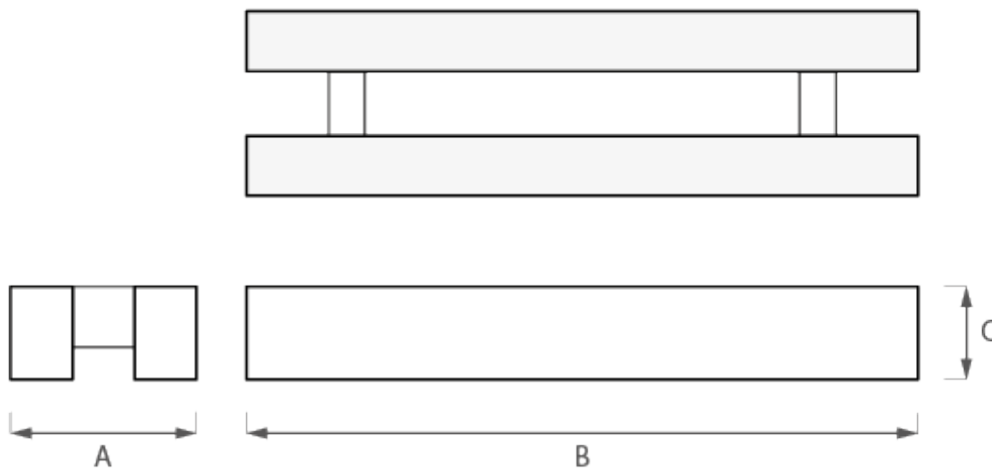
Demonstration image



Photometric curve

Regulations: appliance complies with the following standards:

- | | | |
|-----------------|------------------|---------------------------|
| • EN 61547 | • IEC/TR 62471-2 | • EN 60598-2-2 |
| • EN 55015 | • EN 60061-1 | • EN 62471 (risk class 0) |
| • EN 61000-3-2 | • EN 62031 | • EN 62560 |
| • EN 61000-3-3 | • EN 62493 | • EN 60968 |
| • EN 61347-1 | • EN 60598-1 | • CEI 76-10 |
| • EN 61347-2-13 | • EN 60598-2-1 | • EN 60529 |





Power [W]	Color temperature [K]	CRI	Effective flux [lm] *	Efficiency [lm/W]	Energetic class	Dimensions [mm]			Code / Wiring	
						A	B	C	LED	LED DALI
13+13	3000	>80	2184	84	A++	170	565	78	662000233	662000243
13+13	4000	>80	2340	90	A++	170	565	78	662000234	662000244
20+20	3000	>80	3360	84	A++	170	845	78	662000289	662000290
20+20	4000	>80	3600	90	A++	170	845	78	662000299	662000300
26+26	3000	>80	4368	84	A++	170	1125	78	662000291	662000292
26+26	4000	>80	4680	90	A++	170	1125	78	662000301	662000302
39+39	3000	>80	6552	84	A++	170	1685	78	662000293	662000294
39+39	4000	>80	7020	90	A++	170	1685	78	662000303	662000304
52+52	3000	>80	8736	84	A++	170	2245	78	662000295	662000296
52+52	4000	>80	9360	90	A++	170	2245	78	662000305	662000306
65+65	3000	>80	10920	84	A++	170	2805	78	662000297	662000298
65+65	4000	>80	11700	90	A++	170	2805	78	662000307	662000308

* Actual flow may have a tolerance of ± 10%.

INSTALLATION ACCESSORIES



COD. **KS203043**

Ceiling rose for square model suspension 100x100x25, with two suspensions L = 2000mm, DRY WHITE with terminal block and second hole for 3-pole transparent cable outlet L = 2000mm.



COD. **KS203045**

Ceiling rose for square model 100x100x25, with two suspensions L = 2000mm, DRY WHITE with terminal block and second hole for 5-pole transparent cable outlet L = 2000mm.



COD. **KS203047**

Ceiling rose for square model 100x100x25, with two suspensions L = 2000mm, DRY WHITE with terminal block and second hole for transparent 7-pole cable output L = 2000mm.



COD. **KS012**

Suspension cable L = 2000mm
To be provided for 2 pieces for each lamp.



COD. **CVTxX075L020**

Transparent power cable. L = 2000m Ø 0,75mmq
Cable available with 3-5-7 poles related to the selected wiring configuration.
Change the red x to the required number of poles.



COD. **KS02504E**

Electrified square canopy with 2 holes for the passage of the power supply and suspension cable, with connection terminal board. Painted in DRY WHITE color.